

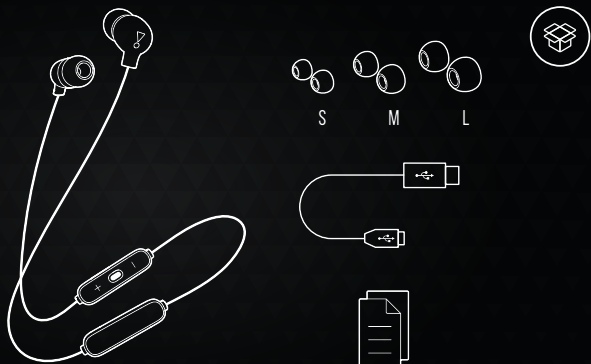
QUICK START GUIDE



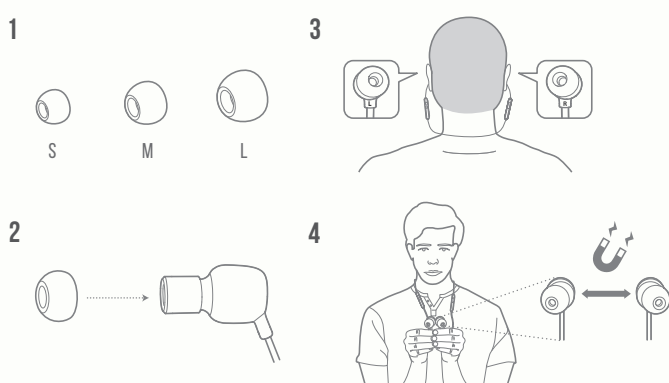
TUNE115 BT



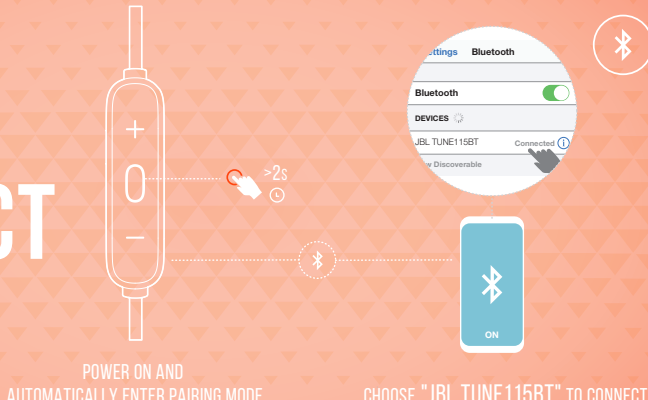
WHAT'S IN THE BOX



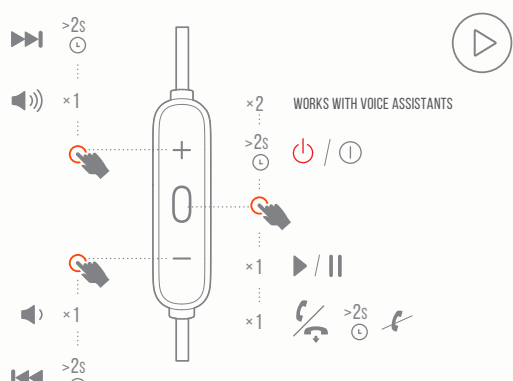
HOW TO WEAR



POWER ON & CONNECT



BUTTON COMMAND

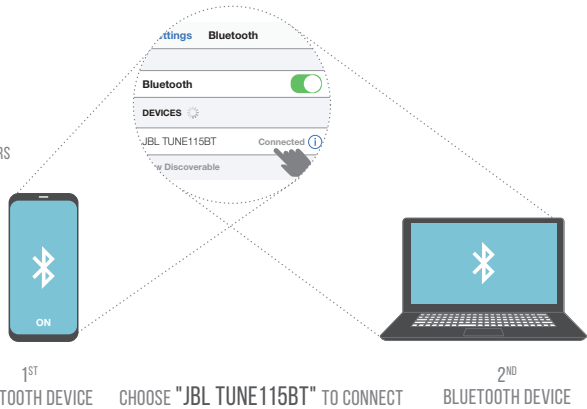


MULTI-POINT CONNECTION

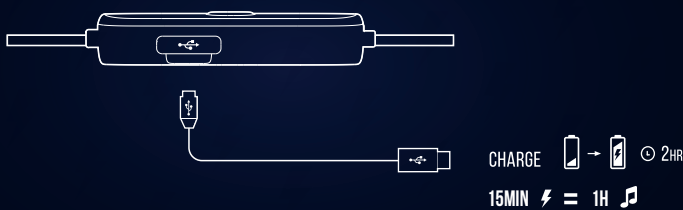
* (MAXIMUM 2 DEVICES)

ENTER PAIRING MODE WITH THE 2ND DEVICE

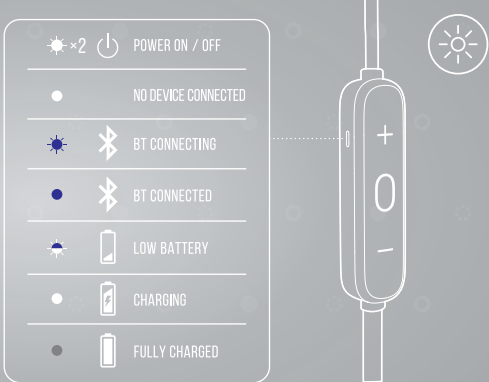
- 1 TO SWITCH MUSIC SOURCE, PAUSE THE MUSIC ON THE CURRENT DEVICE AND SELECT PLAY ON THE 2ND DEVICE.
- 2 PHONE CALL WILL ALWAYS TAKE PRIORITY.
- 3 IF ONE DEVICE GOES OUT OF BLUETOOTH RANGE OR POWERS OFF, YOU MAY NEED TO MANUALLY RECONNECT THE REMAINING DEVICE.
- 4 SELECT "FORGET THIS DEVICE" ON YOUR BLUETOOTH DEVICES TO DISCONNECT MULTI-POINT.



CHARGING



LED BEHAVIORS



TECH SPEC

DRIVER SIZE:	8.6 mm dynamic driver
FREQUENCY RESPONSE:	20 Hz - 20 kHz
SENSITIVITY:	102 dB SPL @ 1kHz 1mW
MICROPHONE SENSITIVITY:	-25 dBV/Pa @ 1kHz
IMPEDANCE:	16 ohm
BLUETOOTH TRANSMITTED POWER:	<5 dBm
BLUETOOTH PROFILE VERSION:	GFSK/DQPSK/8DPSK
BLUETOOTH FREQUENCY:	2.402 GHz - 2.480 GHz
BLUETOOTH PROFILE VERSION:	HFP V1.6, HSP V1.2, AVRCP V1.5, A2DP V1.2
HEADSET BATTERY TYPE:	4.2 LITHIUM-ION BATTERY (3.7 V/160 mAh)
POWER SUPPLY:	5 V = 1 A
CHARGING TIME:	<2 hrs
MUSIC PLAYTIME WITH BT ON:	8 hrs
WEIGHT:	19.02 g